

THE HEDINGHAMS

PARISH MAGAZINE

APRIL 2024

Castle Hedingham & Sible Hedingham



*Delivered FREE to all residences in
Sible & Castle Hedingham*

Cover photo: MD Photography

Harvey Darke

FUNERAL SERVICE

A Family Business

We pride ourselves in putting your needs first

Sible Hedingham CO9 3HT

01787 461138

siblehedingham@harveydarke.co.uk

Sudbury CO10 2EB

01787 471471

sudbury@harveydarke.co.uk

Halstead CO9 2JD

01787 477500

halstead@harveydarke.co.uk

www.harveydarke.co.uk

Welcome

Hello Everyone and welcome to the new look Heddinghams Parish Magazine. As you can see we are now in full colour and we hope to include more community information. Please send suggestions of items of interest to both villages.

Spare magazines will be left at **St Peter's Church, Sible Heddingham; St Nicholas Church, Castle Heddingham; Heddingham Baptist Church; Heddingham Library; Darkins Store and Castle Heddingham Community Shop.**

Please get in touch if you do not receive a copy through your door.

Next year we are hoping to have a photograph of local scenes on the front page, appropriate to the season, sent in by readers - so get out there and start snapping.

We still have room for advertising - the commercial rates are as follows:

Size of Advert	Annual Rate (10 issues)	Single Issue Rate
¼ page	£140	N/A
¼ page	£175	£20
½ page	£350	£42
Full Page	£680	£78
Back Cover	£750	N/A
Advertorials	N/A	400 words & images £125

My thanks go to the Parish Councils for their support in this new venture.

ATL (Ed)

Please note that by submitting articles & advertisements containing personal information subject to GDPR you are consenting to the use of this information in the Heddinghams Magazine. This consent may be withdrawn at any time by contacting the editor at hedparmag@gmail.com

We are pleased that local tradesmen and service providers advertise with us, and we hope you support them. However, we do not check or endorse them in any way.

Church Services



This information will always be available on the church website at
<https://www.hedingham.info/>
 (look at the tab 'Services and Events')



Date	St Nicholas's,	St Peter's,
	Castle Hedingham	Sible Hedingham
Sunday 7 th Apr	No service Invited to <u>Toppesfield</u> 11am	11am Family Service & Baptism
Sunday 14 th Apr	9.30am Holy Communion Church closed 15 th - 26 th Apr	11am Holy Communion
Sunday 21 st Apr	No Service	11am A service of Thanks and Remembrance (see article opposite)
Sunday 28 th Apr	4pm Evening Prayer	11am Holy Communion

ST PETER'S COFFEE MORNINGS



Saturday 22nd April
 Saturday 20th May
 10.00am - 12 noon

**Come along for coffee,
 cake and chat
 All welcome**



ST. NICHOLAS'S CHURCH

Weekly Coffee Mornings take place on Mondays, so do join us for coffee/tea and a delicious cake or scone

10.30 — 12 noon for £2
In aid of church funds

St Nicholas's Church

An exciting new project to relight the church is currently in progress. From the 15th April to 26th April the church will remain closed to the public for the duration of these works. The churchwarden and PCC apologise for the inconvenience at this closure.

There will not be a service of Morning Prayer on Sunday 21st April.

We hope to "launch" the new lighting after its completion, so look out for further details.

Sue Southgate, Churchwarden and The Parochial Church Council



St Peter's Church

In its edition of Friday April 28th 1944 the Halstead Gazette carried the news that six members of the local home guard had been killed in an accident at Rectory Farm, Gestingthorpe where an exercise on how to deal with unexploded grenades was taking place.

Those killed were : Captain John Scanlebury Philp (41) Gestingthorpe; Sergt. Thomas Augustus Firman (45), Sible Hedingham; Sergt. Herbert John William Cousins (33), Sible Hedingham; Cpl. Cyril Arthur Halls (31), Sible Hedingham; Cpl. George Francis John Chambers (29), of Pentlow; and Cpl. John Benjamin Partridge (36), of Belchamp Walter.

To mark the 80th anniversary of this accident and to remember all those who served in the Home Guard in the Hedinghams the 11am Service on April 21st at St Peters will incorporate an act of thanks and remembrance. This service will be supported by the local branch of the Royal British



Friends of St Nicholas's Church

The Friends of St. Nicholas Church invite you to an evening of

Cocktails & Canapés *In The Castle Keep*



*Please join us for another
great evening!*



Friday 19th April

7 pm. - 9 pm.

£15 per ticket

(Includes all cocktails and canapés)

(Made by Tracy!)



**Tickets will be available from: Village shop, The Moot House or
ring ; 01787 462172**

**All proceeds from this event will go toward updating and improving the lighting in
St.Nicholas Church.Reg. Charity No.1000780**

Catholic Church



The Catholic Parish of St Francis of Assisi Halstead
Father Felix Adiele
90 Colchester Road,
Halstead CO9 2EW Tel: 01787 472477

You are warmly welcomed to join us in our religious, pastoral and social activities.

A Catholic Mass is celebrated at St Peter's Church, Sible Hedingham, every Sunday at 9.00am.

Details of the Mass times at St Francis of Assisi Parish Church are published on our Facebook page and can also be found on Enjoy Halstead and Streetlife Halstead pages.

halstead@dioceseofbrentwood.org or stewardofthegospel592@gmail.com
www.facebook.com/stfrancishalsteadparish

Rothwell's
Carpet & Stone Floor Cleaning

Carpet Cleaning & Stone Floor, Upholstery, Rugs

A few points that make us stand out,

Rothwell's has been in business since 1993

We're an honest local family firm.

Our large truck mounted machines mean more cleaning & drying power for the best results possible.

Members of both the NCCA and TACCA.

We will move the furniture.

100% satisfaction or it's FREE.

Call Oliver and Max Campbell for expert help today.

01223 832 928, 01638 428 060

www.Rothwells.biz



The MOWER WORKSHOP

**BUY & SELL
SERVICE & REPAIR
GARDEN MACHINERY**

*Always in stock a good selection
of second hand machinery*

- ⊗ Mowers
- ⊗ Ride on Mowers
- ⊗ Strimmers
- ⊗ Garden Shredders
- ⊗ Hedge Cutters
- ⊗ Rotavators
- ⊗ Wood Laves
- ⊗ Petrol Blowers
- ⊗ Petrol Disk Cutters
- ⊗ Generators
- ⊗ Compressors
- ⊗ Space Heaters
- ⊗ Saw Benches
- ⊗ Small Tools

Gary Lloyd 07437 454532

Email: themowersworkshop@mail.com



WASH FARM, QUEEN ST, SIBLE HEDINGHAM CO9 9RH

Baptist Church



As you read this, Easter will have just passed. Easter is a time when we rejoice in the resurrection of our Lord Jesus Christ who rose to life after being put to death on a cross. It is a time that we can celebrate new life and hope for those who believe in our Lord Jesus.

It seems appropriate to me that we can also celebrate the launch of the new colour version of our Parish Magazine. We take this opportunity to wish all those involved in the production of the magazine every success in the future.

Thank you to everyone who supported our recent Messy Church. Keep an eye out for the next one in May.

Sunday Services 10.30am

Cygnets Mondays 9.30-11.30am in term time £2 per family

Hotspot 10- 2pm Coffee and cakes plus homemade soup and rolls every Thursday Free

Card making group 9.30 -12.30 pm April 13th £12 incl. refreshments and all materials..

Please contact carole@hedinghambaptist.org if interested.

Food Bank 2-4pm Tuesdays. Donations can be dropped off at the times the church is open.

The Baptist Church is also the venue for the following groups:

History Club April 26th

Thursday Club (over 50s) April 11th 2-4pm

Teeny Adventures April 26th 10-1pm

Nick Vosper (01787 460265) nick@hedinghambaptist.org

Dave Wright dave@hedinghambaptist.org

Carole Rainbird carole@hedinghambaptist.org

www.hedinghambaptist.org www.facebook.com/hedinghambaptist

For all events see details on Facebook or Website

My Recycling Calendar

TUESDAY ROUTE 7

APRIL 2024



MAY 2024



JUNE 2024



JULY 2024



AUGUST 2024



SEPTEMBER 2024



TUESDAY ROUTE 2

APRIL 2024



MAY 2024



JUNE 2024



JULY 2024



AUGUST 2024



SEPTEMBER 2024



Grey bin and food bin

Different collection day

Clear sacks and food bin only

Different collection day

Green bin, clear sacks and food bin

Different collection day

Green bin (SUBSCRIBERS ONLY), clear sacks and food bin

Different collection day

Grey Bin

We will only collect waste that is in the bin with the lid shut.

We will not collect additional bags on top or near the bin.

You should only put your bin out by 7am on the day of your collection.

Green Bin

Garden waste collections are a subscription-based service.

Go to: <https://www.braintree.gov.uk/bins-waste-recycling>



Join us and make more music

Enjoy doing something different making new friends and singing your heart out?

Why not come along and join The Heddingham Singers?

We are a mixed voice choir and always welcome new members regardless of previous experience. You don't have to read music and an auditor is not required - just a love of making all kinds of music from Abba to "Willing in The Air".

We practice every Tuesday in Sible Heddingham Baptist Church (next to The Sugar Loaves) from 7.30pm.

For more details see our web site:
heddinghamprinting.co.uk or contact:
hed-singers@pcn.ac.uk or @gmail.com



THE HEDDINGHAMS PARISH MAGAZINE

Delivered FREE to all residences in Sible & Castle Heddingham

You could advertise here for as little as £20

Contact Alison Lilley
hedparmag@gmail.com




Paul Clark printing
LIMITED

Make a better impression

- Leaflets • Posters • Menus • Price Lists • Booklets
- Labels • Business Stationery • Business Cards
- Greetings Cards • Raffle Tickets • Invoices
- NCR Sets, Pads, Books • Plans



sales@paulclarkprint.co.uk
www.paulclarkprint.co.uk
01787 469628



WETHERSFIELD CHAMBER CONCERTS

www.wethersfieldchamberconcerts.org.uk



Sunday 14 April 2024, 4 pm.

HATHOR DUO – flute and harp

Bach, Gluck, Sibelius, Saint Saens, Ravel and others

=0=0=0=0=0=0=0=0=0=0=0=0=0=0=0=0=0=

Sunday 28 April 2024, 4 pm.

KAMMERPHILHARMONIE EUROPA

A chamber group of 8 musicians

Vivaldi, Albinoni, Bach, Holst, Delius, Mozart

=0=0=0=0=0=0=0=0=0=0=0=0=0=0=0=0=0=

Sunday 12 May 2024, 4 pm.

CHARLOTTE SPRUIT - violin

Bach, Pisenadel, Berio

=0=0=0=0=0=0=0=0=0=0=0=0=0=0=0=0=0=

Ticket price: £20 (concessions £18)

Season ticket: £54 (concessions £48)

Children under 16: free

All seats unreserved

Complimentary refreshments during interval
and after concert

VENUE: WETHERSFIELD CHURCH

Further information:

www.wethersfieldchamberconcerts.org.uk



Men's Sheds

Hello Everyone

We had some sad news in January, Kevin one of our men shedders died. He had been a member for many years and we all miss him.



We are on the lookout for new members. If you want something to do on a Wednesday why don't you come a long and see what we get up to. Is there a project you have in mind but don't have the tools or want some help with something or just want some company. **For more information phone Peter 07799863135.**
The Shedders



Filling Station pauses for Easter during April but meets again on Thursday May 16th

The Memorial Hall Castle Hedingham
Alison Fenning, author of 'Lift Up Your Head' - a journey from brokenness to freedom is coming to speak to us.

7.00 for food and 7.30 start.

The evening is free.

We meet to grow closer to Jesus and each other.

All are welcome - especially the curious!



APPROVED COAL MERCHANTS



SMOKELESS COAL / ANTHRACITE GRAIN

TEL: 01440706131 Mob: 07830904493

Email: Ddebnam3@aol.com

PLEASE CONTACT FOR FURTHER INFO OR TO PLACE AN ORDER

Hedingham Tree Care — & Garden Services —

- Stump Grinding
- Roots Removed
- Tree Felling
- Dangerous Trees
- Logs For Sale
- Wood Chipper
- Tree Pruning
- Hedge Trimming
- Grass Cut Monthly
- Turfing/Seeding
- Patios/Paving
- Garden Sheds Cleared
- Artificial Lawns
- Weeding Service
- Decking Service
- Fences/ Gates

FREE ESTIMATES

Darren: 01376 326 163

07775 998628



CH Women's Group

The next meeting is on Wednesday 17th April, 2pm at the Memorial Hall, Castle Hedingham. This time we are delighted to welcome back Bryan Thurlow whose talk is entitled 'Music Hall Memories'. Bryan will present a pocket history of Music Hall, a light hearted look at their past. Hear all about the artistes, their songs and other acts which contributed to the success of British Music Halls. I'm sure this is one not to be missed.

Thanks to everyone who contributed in any way to the Coffee Morning held on Saturday 9th March.

Please call Sylvia if you would like to join the group or for any information about it. 01787 469129.

COACH TRIPS

To enquire, for more information or to book any trip, including the weekend break, please call

Ann on 01787 469719 or 07442 180237 or Hilda on 01787 461729 or 07513 886288.

Cheques made payable to CHWG.

Friday 10th May – Leonardslee Lakes and Gardens, West Sussex. Reopened in 2019 after extensive restoration the glory of the spring flowering season should greet our arrival. Cost for coach and entrance is £40 pp, payable by 19th April please. Leaves Memories 9am, The Bell 9.10am or Co-op 9.15am. Leave Leonardslee at 4.30pm.

Tuesday 4th June – Elton Hall and Gardens, Nr Peterborough. Cost for coach and entrance to Hall and garden is £42 pp, payable by 13th May please.

Friday 5th July – Cromer and the Pier Summer Show. Cost for coach and show ticket is £50 pp, payable by 16th May please.

Wednesday 7th August – Houghton Hall and gardens, Norfolk, including Anthony Gormley and Magdalene Odundo exhibitions. Cost for coach and entrance to the Hall, gardens and exhibitions is £50, payable by 4th July please,

Weekend Break 4th – 6th October going to South Downs and New Forest, including visiting the Weald and Downland Living Museum, spending a day in the New Forest and time in Portsmouth. Cost is £289 pp, single supplement £77 including coach travel, 2 nights dinner, bed and breakfast and entrance to the Museum.



Sible Hedingham Library

Opening hours

Monday 9am-1pm

Thursday 2pm-7pm

Saturday 9am-5pm

Mondays

Baby and Toddler Rhymetime 9.30am-10.00am

Knit and Natter 10.00am - 12noon *Bring your knitting and have a chat*

Thursdays

Book Group meetings 2pm – 4pm *contact library for details*

Family Storytime 3.30pm - 4.30pm

Saturdays

Children's stories and crafts 10.00am – 11.00am

Lego club 2.30pm – 3.30pm

Every 4th Saturday of the month – Litter Picking Group Join us for our monthly litter pick to try and keep our local environment free from litter

DARKINS

SUPPLY STORES

01787 462536

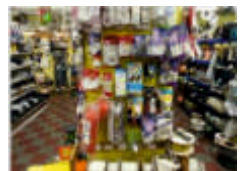
darkin@btconnect.com

**A FAMILY RUN, INDEPENDENT HARDWARE
STORE IN SIBLE HEDINGHAM**



OPEN
Mon - Sat
0800 - 1730hrs
*Closed Sundays
& Bank Holidays*

122 SWAN STREET
SIBLE HEDINGHAM



IF WE DON'T STOCK IT, WE CAN GET IT

Castle Hedingham Village Shop and Post Office.

Village Shop. 5 St. James Street. Telephone: 01787 462104.

Post Office. 7 St. James Street. Telephone: 01787 463943.

Our Village Shop is run by volunteers and our purpose is to provide good service and help build friendship and a stronger community. We wish you a warm welcome.

We are open Monday – Saturday 8am – 5pm. 8am – noon on a Sunday.

Daily newspapers and magazines. Humes of Halstead bread. Priors Farm ham, bacon and sausages. Ballingdon milk. Fresh Produce fruit and vegetables. Cold drinks. Frozen goods. Deli goods. Crisps, sweets, cakes and snacks. Tins/jars/packets. Tobacco. Gifts. Noel Tatt greeting cards. Greeting cards from local artists.

Castle Hedingham Post Office.

Our priority Covid post box is next to the Village Shop.

We are open 9am – 1pm Monday – Friday.

Home shopping returns. Send letters, cards and parcels. Send your parcels to the Post Office for collection. Pay in/take out money with your debit card. Pay in cheques. Mobile top ups. Pay utility and Council Tax bills. Utility top ups (card or key). Foreign currency (you can order foreign currency for collection at the Post Office). Travel Insurance. Travel currency cards. Home and life insurance. Business banking transactions including change exchange. Photo copying. Gift cards. Greeting cards. Gifts. Stationery. Make donations to DEC (Disasters Emergency Committee dec.org.uk) to help humanitarian appeals.



Postmaster and Director Julia Allen. Lead Volunteer Joanne Beavis.

Heddingham History Group

THE WARS OF THE ROSES



An illustrated talk by HHG member

Mia Jadeja

Friday 26 April 2024 at 7.30pm

at Heddingham Baptist Church, 177 Swan Street, Sible Heddingham,
CO9 3PX (next to The Sugar Loaves)

Members of Heddingham History Group FREE / non-members £5/

under-25s FREE

Tea / coffee & cake / biscuits £2 - **ALL WELCOME**

For further information, phone 01787 829317 or e-mail

jan.cole.heddingham@gmail.com

MOBILE FOOT HEALTH PRACTITIONER

- GENERAL FOOT HEALTH CHECK
- TOE NAIL CUT, CLEAN & SMOOTH
- ENUCULATE CORNS
- REDUCE CALLUS
- TREATMENT & ADVICE
- FOOT MASSAGE



Diane Wilkinsan
TEL: 07564 189905

REGISTERED PROFESSIONAL
TREATMENT IN THE COMFORT OF
YOUR OWN HOME.

BACCHUS DESIGN LIMITED

Planning and Architectural Design

Small local business
Extensions
Loft conversions
New properties
Planning and Building Regulations



Contact Mark 07976 290886
mark@bacchusdesign.co.uk



The Little Flowerhouse

The Cabin at Wash Farm, Queen Street, Sible Hedingham. CO9 3RH

Call: 07736 280602

Your local Florist serving your community

Bespoke floral designs for all occasions, seasons and budgets

Bouquets, Arrangements, Farewell & Sympathy Flowers, Wedding Flowers,
Candle gifts and greetings cards. Deliveries within a 10 mile radius.

Subscriptions are also available.

Open Monday to Saturday 08.30 to 17.00 Wed 08.30 to 13.00 Closed Sundays

Email: thelittleflowerhousegosfield@gmail.com

Web: www.thelittleflowerhouse.co.uk

First Hedingham Guides



MEET ON MONDAY EVENINGS DURING TERM TIME IN CASTLE HEDINGHAM AND WOULD WELCOME GIRLS BETWEEN THE AGES OF 10 TO 15 FROM BOTH SIBLE AND CASTLE HEDINGHAM AND THE SURROUNDING VILLAGES.

**NEXT TERM RUNS FROM 22 APRIL TO 15 JULY 2024
THE PROGRAMME INCLUDES THE FOLLOWING ACTIVITIES**



- * FIRE LIGHTING * OUT DOOR COOKING ***
- * BAKING * GADGETS ***
- * COOKING * SPORTS * SEASONAL CRAFTS ***
- * ST GEORGE * BADGES VILLAGE TRAIL ***
- * TREASURE HUNT * SUMMER PARTY ***

**FOR FURTHER INFORMATION EMAIL KATHIE
hedingham.guides@btinternet.com**



We are a small company where the personal touch is important. With many years of experience, we have handled jobs from small property improvements to extensions, barn conversions and house building. Working on listed buildings is a specialty.

<https://castlegentbuilders.co.uk>

Phone: 07894 827702

email:

castlegentbuilders@gmail.com



with Spotty Dog Creative

Design & Print For Small Business and Individuals, Providing All You Need For New Business Start Up



Contact Louise for logo design ideas and printed materials to make your advertising and promotions stand out

07974 080731 design@spottedogcreative.co.uk



Design Print Website

spottedogcreative.co.uk



Daniel Robinson & Sons

Your Local

Independent Family Funeral Directors

Friendly, supportive & professional service at your time of need

**Prepaid funeral planning or
free recording of your Funeral Wishes**

Chauffeur driven funeral fleet

Excellent local facilities in the heart of Halstead & Braintree

Conveniently located at

31 High Street Halstead

01787 475533

7 Manor Street Braintree

01376 320582

www.drobinson.co.uk





WELCOME CASTLE HEDINGHAM TO HYPERFAST FULL FIBRE BROADBAND

Order your Hyperfast connection today

Our work is now complete and it's time to enjoy the benefits of a Hyperfast **Full Fibre** broadband connection. That means;

- Stream TV in multiple rooms without buffering
- Download the latest 130GB game is less than 16 minutes
- Work from home with confidence your wi-fi won't drop out
- Crystal clear video calling without lag
- Future proof your home with a brighter digital future

We're **NOW** ready to connect **YOU!**

NEW Addresses now added

REFER A FRIEND and we'll donate £50 to the Bowls Club

Scan here



Call **01376 538000** or visit **countybroadband.co.uk**

CH Community Allotment



Funded by
UK Government



Our Community Allotment at the Village Park was created to benefit everyone in the village in a variety of ways, and we are very grateful to Braintree District Council for two Levelling Up fund Community Gardens grants to help us make it a beautiful productive space which is restful to visit. The grants have enabled us to buy tools, install raised beds, a potting shed and rainwater harvesting, as well as folding chairs & table with a gazebo for rainy or sunny days.

Please feel welcome to:

- **Volunteer at our weekly sessions, Wednesdays 10am to 12 noon. No experience necessary, just come along to enjoy being outdoors and part of a friendly group of volunteers**
- **Drop by for a visit and a chat at a weekly Wednesday morning session, our Community Allotment volunteers will be pleased to see you and might even offer a coffee!**
- **Enjoy our freshly harvested seasonal produce which can be collected from the Village Shop at St James Street. We want our fresh vegetables and fruit to be available to everyone, an optional donation will of course be welcome**
- **Join in with our Community Allotment events over the coming season, we have plans and hope to see you there!**

For further information, contact Charlie at charlieallotmentch@gmail.com or call the Parish Clerk on 07845 056597



Parish Council Meeting Minutes

Abridged Minutes of Sible Hedingham Parish Council Meeting Held in the Village Hall on Monday 11 March 2024 at 7.30 p.m.

In the chair – Cllr Lee

Present: Cllr Beavis, Cllr Calver, Cllr Cole, Cllr Luxon, Cllr Metson, Cllr Ranson, Cllr Taylor, Cllr Young

Mrs L Slade – Clerk, Mrs K Hoyer – Relief Clerk & 8 Members of the Public
Public Comment - The litter has been partly cleared from the football pitch.

Apologies for Absence Cllr Harris – Resignation: Cllr Adam – Last minute commitment

Cllr Schwier – Braintree District Council meeting

District Councillors Reports.

Cllr Beavis spoke about the recent death announcement of her previous, long standing District Councillor colleague, Cllr Hylton Johnson. Cllr Beavis said that Cllr Taylor and she would be attending the funeral this March. She wholeheartedly thanked Cllr Johnson for his service to the Hedingham Ward and Braintree District Council.

Cllr Beavis reported the budget process at Braintree District Council has been concluded and all precepts have been submitted. Cllr Beavis and Cllr Taylor have an upcoming meeting with the Chief Executive of Braintree District Council and will discuss possible improvements to areas in the village. Cllr Beavis is to raise the matter of the S106.

Electricity contract – it was agreed to the contract for a 1 Year Fixed Business Plan and review next year.

It was agreed to increase the Garden of Remembrance fees.

MUGA - Following receipt from three contractors of very professional & comparable quotations it was agreed to go ahead with Contractor A. Councillors were also in agreement to work commencing as soon as is practicable. Post meeting note – this item to be finalised at the April meeting.

To discuss a donation to the Scouts towards a visit to the International Jamboree

Majendie Trinity Explorer Scout Unit requested a donation towards their forthcoming International Jamboree in return for litter picking. This is to be discussed at the Climate and Environment Sub-Committee meeting on 25th April 2024. The Parish Council will consider match funding the District Councillor's Grant.

Reports from sub-committees:- Finance, Governance and Audit - No meeting
Climate and Environment – A meeting is proposed for Thursday 25th April at 7:30 pm to which the Green Heart Champions and villagers will be invited. Clerk to check availability of the Village Hall.

Events, Community and Communication – The first formal meeting was held on Thursday 7th March. The Annual Parish meeting is proposed for Wednesday 29th May at 7:30 pm – Clerk to check the availability of the Village Hall. This is to promote local businesses and the local community, guest speakers will be invited

Parish Council Meeting Minutes

and refreshments will be served.

Planning – No meeting

Personnel – No meeting

A group of residents are seeking a piece of land in the parish of Sible Hedingham for dog agility. This was recognised by the Parish Councillors, who themselves were looking for a piece of land for allotments.

It was agreed that the Football Club need to enter into a Trade Waste Agreement with BDC.

The following planning applications were discussed:

24/00308/HH Walnut Tree Cottage Delvin End Sible Hedingham CO9 3LN Single storey side extension. - No comments

24/00431/HH 14 Yeldham Road Sible Hedingham CO9 3QJ Single storey rear extension - No comments

24/00441/FUL Sydney Villa 124 Swan Street Sible Hedingham CO9 3HP

Conversion of existing 2 bedroom residential annex into 1 bed single storey dwelling. Objection concerns being continual lack of car parking space plus entrance safety issues.

For information only:- 24/00294/HHPA 10 Alexandra Road Sible Hedingham CO9 3ND Application for Certificate of Lawfulness for a proposed development – Single storey side extension.

24/00332/AGR Hostage Farm Wethersfield Road Sible Hedingham CO9 3LB

Application for prior notification of agricultural forestry development – Extension of agricultural barn.

24/00298 /P14JPA Hedingham School Christmas Field Sible Hedingham CO9 3QH

Notification for prior approval for the installation of solar photovoltaics (PV) equipment on the roof.

24/00348/AGR Land North of Willow Tree House Braintree Road Sible Hedingham Agricultural storage building.

Plan No. PROW-23-24 CO9 3RH Route to Close A-B New Route A-C-D

To divert Footpath 65 Sible Hedingham in the Braintree District under section 119 of the Highways Act.

Notification of Planning Appeal under Section 78:- 23/01048/FUL 43 Hawkwood Road Sible Hedingham CO9 3JR Erection of 1 No. 3 bed detached dwelling.

Clerks Report

The Clerk's Report having been previously circulated to all Councillors and taken as read.

Agenda items for next meeting and exchange of ideas only

Cllr Young commented on the outdoor gym area at the Riverside Walk.

Cllr Lee advised a letter from Hedingham School has been sent to all parents to remind them to be considerate when parking at Christmas Fields.

Meeting Closed: 8:35 pm Next Meeting: 8 April 2024

Parish Council Meeting Minutes

ABRIDGED MINUTES OF A MEETING OF CASTLE HEDINGHAM PARISH COUNCIL, HELD ON MONDAY 11th MARCH 2024, 7.30PM AT CASTLE HEDINGHAM CLUB

Present: Cllrs Allen, Deeks, Doe, Dover, Foulkes, Mowle, Southgate, Smith, Westrop

In the Chair: Cllr Southgate Clerk: Claire Waters

Also present: 1 parishioner to item 5. Cllr J Beavis BDC, Cllr W Taylor BDC from item 16 to close of meeting

PUBLIC FORUM - A resident attended and thanked the Parish Council for their support at the Public Inquiry on the proposed diversion of FP25

PROGRESS CHECK

Oak Tree, Public Toilets. RESOLVED: The clerk will obtain a quote from the retained tree surgeon for trimming of branches touching the public toilet roof. Work approved subject to confirmation of cost.

Village Park: Offensive graffiti on play equipment had been removed by Village Maintenance.

Summer Fete: The Village Hall and Club committees had been asked if they wish to be involved. Saturday 27th July was suggested as a suitable date for a village event, as the historic date of the St James Fair which used to be held annually. Further details to be confirmed. Any person or group wishing to be involved in this summer event please contact the clerk at castlehedinghamparishclerk@gmail.com

Action: The clerk will contact the Club & Village Hall committees again as well as other local groups.

New Park Rewilding area: A commemorative bench from Queen Elizabeth II Coronation will be refurbished. A suitable location at New Park was discussed and agreed.

HIGHWAYS & PUBLIC RIGHTS OF WAY

Footpath 25 Scotch Pasture ROW 3316971: Following the Planning Inspectorate inquiry on 5th & 6th March 2024, the Chairman expressed his appreciation for all the work and effort put in by village representatives and the Parish Council. He felt all had done their best whatever the outcome. The planning inspector indicated his decision will be made in a few weeks' time.

20's Plenty for Essex: A report and recommendations from a meeting with 20s Plenty for Essex organisation on Tuesday 27th February were noted. It is possible that the whole 30mph area of Castle Hedingham would benefit from a change to 20mph

Action: The clerk together with Cllr Smith will continue to liaise with De Vere Primary on communicating the message to residents and obtaining their views. See <https://www.20splenty.org/> for details of the national campaign

Station Road bridge: Essex Highways had replied to a query about the repair work. The bridge has become unstable due to loss of bricks from one of the arches. It is a Grade II listed structure, so they are in consultation with a company who specialise

Parish Council Meeting Minutes

in restoring listed masonry. It is anticipated that repair works will be carried out this summer/autumn if the necessary approvals are in place.

Castle Lane drains: A request had been submitted to Essex Highways to fund drain clearance by a private contractor selected by the Parish Council, since Highways are saying their drain jetting vehicles are too big for the lane. This had been chased up but no response from Highways yet.

St James Street: Anglian Water planned road closure has changed to Sunday 21st April.

CASTLE HEDINGHAM CLUB & VILLAGE HALL

Quotes to address damp at front and rear flat roof of Social Club and rear flat roof of Hall had been requested but not yet received. Action: The clerk will share the job specification document with Cllr Deeks as Hall committee representative and Cllr Smith as Club committee representative in case other roof specialists are known to committee members and can be asked to quote for the work.

VOLUNTEER TASK & FINISH GROUPS

Volunteer Policy, RESOLVED: To adopt the Volunteer Policy to ensure safe work-ing practices which comply with Parish Council insurance requirements. The new Volunteer Policy will be published on www.castlehedingham.org together with the project application form for any new volunteer projects.

COMMUNITY ALLOTMENT

Update: A grant fund report to BDC will be submitted shortly. A Community Allotment information page on the website is now launched at <https://www.castlehedingham.org/community/community-allotment/> . The contractor has re-worked the quote for raised beds, saving £100 on materials. The 2 new raised beds and raised height of two existing beds should be completed at the end of March

Bike Rack: Location of a bike rack at the Village Park (funded by BDC Community Garden grant) was considered, and agreed that alongside the Public Toilets would be the best position.

Action: Clerk to purchase and arrange installation by Village Maintenance

WETHERSFIELD AIRFIELD – ASYLUM CENTRE & PRISON PROPOSALS

Traffic Impact Report: Following a request from WASC, the clerk will write to James Cleverly MP regarding negative traffic impacts on Castle Hedingham if pris-on proposals go ahead at Wethersfield. A template letter has been provided by WASC.

AGENDA ITEMS FOR NEXT MEETING

Public Toilets: To review Service Level Agreement with BDC for the next 5 years

Burial Board: Report from Burial Board meeting at Cemetery.

Parish Council Meeting Minutes

Village Park: Report from Village Park group on suitable play area project for an application to the Hypercharged Grant fund operated by County Broadband.
Rewilding New Park: update and arrangements for on-site meeting

NEXT MEETINGS:

Monday 8th April 7.30pm Ordinary Parish Council meeting C/Hed Club

Monday 13th May 7.30pm Ordinary Parish Council meeting C/Hed Club

Monday 20th May 7.30pm Annual Parish Assembly -Village Hall

The meeting closed at 8.58pm

Full minutes of meetings including planning applications and financial information are published at www.castlehedingham.org

Please sign up to membership of our new website at www.castlehedingham.org to receive email notification of Parish Council updates and news relevant to Castle Hedingham. You can also follow the Castle Hedingham Parish Council page on Facebook

PAUL BRAZIER KITCHENS, BATHROOMS AND BEDROOMS LTD

- Free design and quotation service with computer generated drawings
- Vinyl & laminate flooring supplied & fitted
- Full installation service
- 20 years local experience
- Large range of floor and wall tiles



SHOWROOM
at 114 Swan Street
Sible Hedingham
Tel: 01787 462050
Mob: 07917 341361

E: paul@paulbrazierkitchens.co.uk
W: www.paulbrazierkitchens.co.uk

Registered With All Major Insurance Companies
Free Car Parking - Evening & Saturday Appointments Available

Physiotherapy & Sports Injury Clinics

Back & Neck Pain
Sports Injuries
Sciatica
Prolapsed Disc
Whiplash
Tendons & Ligaments
Joint Problems
Sprains & Strains
Dizziness & Headaches
Sports Injuries
Post Operative

Complementary Therapies
Sports Massage - Acupuncture
Pilates - Yoga - Reflexology
Chiroprody & More

BRAINTREE
White Lodge,
21 Coggeshall Rd,
Braintree, CM7 9DB
01376 334040

HALSTEAD
Bank Building,
2 Market Hill,
Halstead, CO9 2AH
01787 478789

HAVERHILL
Anne of Cleves House,
Hemel Road,
Haverhill, CB9 8EE
01440 705656



PHYSIO
HEALTH



www.lanephysio ltd.co.uk



CH Bowls Club

Centenary Year!

2024 is a very exciting year for the Castle Hedingham Bowls Club because it is 100 years since the club was founded in the grounds of Hedingham Castle. Miss Majendie of Hedingham Castle, very generously made available an area in the castle grounds for two rinks, which were ready for the first season of friendly matches by the summer of 1924.



We have come a long way from originally having two rinks which were not full length, to having a six-rink green which is of a high standard and is frequently used to host various league finals nowadays.

In 1942 the gentlemen from the Sible Hedingham Club were invited to join the Castle Hedingham Club, which boosted membership numbers. In 1947 the club was invited to join the Steeple Bumpstead League. Between 1959 and 1971 extensions to the club were constructed with the approval of Miss Majendie. These included a ladies' toilet which made it possible to open the club's membership to ladies in 1971.

In 1986 it became clear that a new location would be required for the club to allow it to increase the number of rinks to six. The search for a new home was successful when land was leased from Mr Newton next to the Scout Hut in Sheepcot Lane. The members of the club carried out the massive task of constructing the green and the pavilion. The green was officially opened on 27th May 1991 and the pavilion was opened on 11th August 1994.

At the end of the 2023 season, we had 77 full members, 7 life members and 28 social members, and we are always open to new members. The Club now has eleven teams across four leagues as well as an active Friendly team. Our members participate (and often win) numerous knockout league competitions, and the Club is growing from strength to strength. We have several centenary events arranged throughout the year. The first is on 24th April when the Chelsea Pensioners Bowls Club will visit us for a match. They will arrive in their splendid red uniforms and will march from their coach to our club at about 1pm. Perhaps you can come and help us welcome them to our village! In July we have the honour of playing a match against the Royal Household Bowls Club at Windsor.

It should be a great season!



YOUR LOCAL TIMBER & LANDSCAPING SUPPLIER

GROUND REINFORCEMENT
(GRIDS & MESH)



STONES, CHIPPINGS &
GABIONS



High Quality,
Low Prices

HANDMADE FENCE
PANELS



RAILWAY SLEEPERS
& DECKING



Thousands of
Products



Rated 4.6 ★
by Customers



CALL OR EMAIL US FOR A QUOTE
VIEW MORE PRODUCTS ONLINE



Same-Day
Click & Collect



01376 503869



sales@sure-green.com



www.sure-green.com



www.facebook.com/suregreenltd

Suregreen Ltd
Viridis House
Toppesfield Road
Finchingfield, Essex
CM7 4NZ



Castle Hedingham Cricket Club

Home games are played at our beautiful ground in Castle Hedingham - so come along and join the team or bring along a picnic and enjoy the idyllic surroundings.

Sunday	28 th Apr	Long Melford	1300	Home
Sunday	5 th May	Bury St Edmunds	1330	Home
Sunday	12 th May	Cavendish	1330	Away
Sunday	19 th May	Nowton	1330	Home
Sunday	26 th May	Acton	1330	Away

Full details can be found at our website:-

www.castlehedingham.play-cricket.com



Providing high standards of treatment and care for all your pets

Open Monday – Friday
9am – 6.30pm

**1 Bridge Street, Great Yeldham
01787 238255**

Emergency Out of Hours
01787 372588 07836 723934

SUDBURY AREA CANCER SUPPORT GROUP

Find events on Facebook

For more information, contact Ruth Worsley
ruth-SACSG@outlook.com



Free advice and quotations on all your upholstery needs
Local family run business with over 25 years experience
Furniture completely transformed by our team of craftsmen
Wide range of fabrics to choose from



Telephone: 01787462000

Email: info@williamaustinupholstery.co.uk

Website: williamaustinupholstery.co.uk

Facebook: [williamaustinupholstery](https://www.facebook.com/williamaustinupholstery)



April 2024 Shopping List and Update

We would like to thank you for your continued support. With the cost of living crisis and rising food prices any donations made are gratefully received. We also know and see how much your donations mean to those who find themselves in food crisis.

We have distributed over 2,600 parcels to those in need so far this year and we find ourselves in the unfortunate position that as fast as the donations are coming in we are giving them out. Your support is vital.

Our Community Outreach Officer is working hard to build links with local communities so that we can help those who are unable to reach a centre for example those with mobility issues. This outreach work is for anyone who finds that they need support in both towns and rural areas. If you would like more information about this service please email outreach@braintreearea.foodbank.org.uk or telephone 01376 330694 and ask to speak to Sarah.

Food items	
<ul style="list-style-type: none"> • Tinned cold meat i.e. Spam • Tinned hot meat i.e. Stews • Jam 	<ul style="list-style-type: none"> • Long life sponge puddings • Rice • Tinned rice pudding • Gluten free alternatives
Non-food items	
<ul style="list-style-type: none"> • Cat/dog food • Shampoo 	<ul style="list-style-type: none"> • Deodorant • Conditioner

*** Please note: We ask for small packs** as larger packs do not fit in our boxes making it difficult for our clients to carry home. Also, we are unable (for hygiene reasons) to split large size or catering packs.

We are always pleased to accept monetary donations if you prefer or Supermarket Gift Cards.

Please Note: We follow the standards set by the Food Standards Agency. We can only accept donations of unopened and undamaged goods that are still well within their "use by" date (no less than six months if possible). Items which do not meet these requirements cannot be used and your donation may be wasted.

T: 01376330694

E: info@braintreearea.foodbank.org.uk

W: www.braintreearea.foodbank.org.uk/give-help/donate-food

CH Gardening Club

Hello everyone! It was lovely to see so many of our members on the first meeting of our Spring programme, we had a great start with a talk entitled "Suffolk Walks" given by Angie Jones ably assisted by her husband Maurice. Angie illustrated her talk with some lovely slides and then tested our knowledge of local villages and the countryside.

For our meeting on April 11th we will be having a talk entitled "Encliandrias Fuchsias" to be given by Paul Leatherdale.

A reminder that our afternoon meetings are held on the second Thursday of the month at the Memorial Hall, Castle Hedingham, if you are not a member but would like to come as a guest you will be made so welcome, we are such a friendly group. The last afternoon meeting of the season on May 9th will be a talk entitled "When Birds Sing" this will include photographs, birdsong and music videos to be given by Saffron Summerfield.

A date for your diary, we will be holding our Annual Plant Sale on May 25th 10am - 12pm at the Memorial Hall. There will also be refreshments available and a cake and biscuit competition. If anyone can help us with providing plants we will be very grateful, some of our members are already busy potting up cuttings from their gardens. Please come along and support us.

Bye for now Christine, Jean, Maureen, Mary, Barbara and Suzanne.

Chairman Christine Lucock 01206 210872.

Secretary Jean Collings 01787 461663.

Treasurer Maureen Lofting 01787 463343.



Gardening tips for April

1. Sow hardy annuals, herbs and wild flower seed outdoors
2. Protect fruit blossom from late frosts
3. Tie in climbing and rambling roses
5. Start to feed citrus plants
6. Increase the water given to house plants
7. Feed hungry shrubs and roses
8. Sow new lawns or repair bare patches
9. Prune fig trees
10. Divide bamboos and waterlilies

SIBLE HEDINGHAM VILLAGE HALL

Registered Charity No. 301397

AFTERNOON TEA DANCES AT THE VILLAGE HALL

50/50 ballroom, latin and modern
sequence

7th APRIL 5th MAY

2.30pm – 5pm

**£5 includes homemade
cake, tea/coffee**

For further information call Tony
07790516580

CASTLE HEDINGHAM CLUB

We are a family friendly social club
welcoming current and new
members with regular
entertainment!



We have a comfortable lounge
area and serve a variety of beer,
real ales, wines, spirits and soft
drinks.

Church Lane, Castle Heddingham
Phone: 01787 460819



Castleheddinghamclub



Live well, *your* way

Start your home care journey with
Home Instead® today.

- Home Help
- Personal Care
- Companionship
- Dementia Care

01206 417074 / 01376 319100

mike.sheehy@braintree.homeinstead.co.uk

© 2017 Home Instead. For more information, contact us at homeinstead.co.uk. Copyright © Home Instead, 2017.

Hedingham Heritage Society

Our next spring meeting: **Thursday 4th April**
'The Cuckoo comes in April' Drew Lyness - British Trust for Ornithology
7.30 pm Castle Hedingham Memorial Hall

Later this month you may hear the familiar call of the cuckoo, heralding its own migratory arrival and providing us with a common message that spring has really arrived. Chris the cuckoo, part of the BTO's cuckoo tracking project, was tagged in 2011 and perished in 2015. Chris spent roughly 47% of his time in Africa, 38% of his time on migration and just 15% in Britain. The tracking study showed that cuckoos are truly African birds which make long and dangerous excursions to Britain purely for the purposes of breeding. Their arrival matches the breeding season of their host species but for their return the newly born young cuckoo makes the journey back to Africa long after its parents have gone.



Drew Lyness from the British Trust for Ornithology will be telling us more about some of the amazing facts and the latest BTO scientific research on bird migration, particularly on the cuckoo as well as other migratory bird visitors that you may soon see in your garden.

Also, this month, join us for a 'members only' spring visit and flora and fauna walk around **Hill Farm, Gestingthorpe with Ashley Cooper and EWT wild flower recorder, Sheila Bareham.**

Meet 2pm, Sunday 28 April at Hill Farm, Gestingthorpe CO9 3BL

Do join our local and natural history society, annual membership for 2024 is £15. Members free for all walks and talks, non-members - £5
All Welcome

Rob: 01787460664 Trudi: 01787462889 Peter: 01787469953
www.hedinghamheritage.org.uk
hedinghamheritage@gmail.com

Tutton Timber



Fence panels
Oak beams
C24 Treated timber
Sleepers
Garden sheds
Local delivery

tuttontimber@gmail.com
01787 477421



Halstead Foodbank

St Andrew's Church
Parsonage Street,
Halstead CO9 2LD

Mondays 10—12

General Enquiries 01376 330694

Email: info@braintreearea.foodbank.org.uk

All donations will be gratefully received. Also at: St Nicholas's Church & Hedingham Baptist Church

G&W FENCING

**All types of domestic
fencing provided**

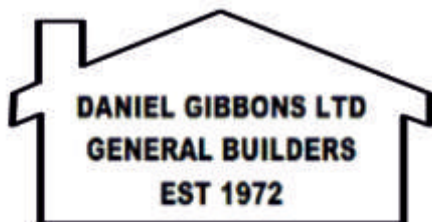
We are a friendly local company with over 10 years' experience and fully insured.

Covering areas around the Essex and Suffolk border.

Please contact us for a free quote and no obligation advice.

**Contact Paul: 07967 962374
or 01787 228740**

**www.gnadwfencing.co.uk
gnadwfencing@gmail.com**



Extensions & Alterations
Plumbing and Electrical Work
All Painting and Decorating Covered
Driveways and Concrete Bases
Undertaken
Roofing and General House
Maintenance Work

PHONE: 01787 460129
MOBILE 07775 728263

EMAIL
danielgibbonsltdbuilders@gmail.com

Have you heard about those scary Asian Hornets which are a huge threat to our native honey bees? I hope our volunteers watch out for them in the garden at SESAW. People can report any sightings via a mobile phone 'app' from the [gov.uk website](https://www.gov.uk).

Read about it at: New app to report Asian hornet sightings - <https://www.gov.uk/government/news/new-app-to-report-asian-hornet-sightings> (See graphic below)

Birdsong, daffodils and lighter evenings herald the arrival of Spring but we have animals from last summer, still awaiting new homes, including a bonded pair of Saluki dogs. Lily and Grey are looking for a loving home with a comfy sofa after raising their five puppies. If you, or someone you know, could be that special person they deserve, please call or email.



We are full to overflowing with rescued animals which is impeding vital maintenance so we have decided to close from 1st April for at least one month to facilitate renovations. Rescue intake is now on a strictly emergency basis to free up the accommodation in need of repairs. Rehoming of animals will continue by appointment only during April and extra help will be drafted in to take incoming calls and emails. We apologise for any inconvenience caused whilst these essential works are carried out and hope everyone will be understanding until normal service can be resumed.

Warmest wishes for a blessed Easter and don't forget to keep any chocolate eggs away from animals, particularly dogs like me, Kenny (the Boss) Chihuahua.

Suffolk & Essex Small Animal Welfare Reg.Charity No.1124029

Stoke Road, Leavenheath, CO6 4PP.

Tel: 01787 210888, www.sesaw.co.uk

Think you've seen an Asian Hornet? Report it!



Report through the Asian Hornet Watch app or www.bit.ly/asianhornetreport



Family owned local strength and
conditioning gym

PRE-SALE OFFER

APRIL ONLY

£30

per month

WASH FARM, QUEEN STREET
SIBLE HEDINGHAM CO9 3RH



breensgym.com

Village Hall Clubs

Thursday Club – Sible Hedingham

This is a monthly club for older people that meets on the 2nd Thursday, from February through to December. Starting at 2pm & finishing at 4pm, it takes place at the Baptist Church 177 Swan St, Sible Hedingham. Each month there is a different speaker, followed by refreshments served with cake, ending with a raffle. Admission is £3.00. The club is very friendly, so whether you are alone or accompanied by a friend, it is the perfect place to enjoy an afternoon's entertainment.

Crafty Nannas

Have you ever thought you have a crafting skill and would like the opportunity to be involved in community projects? Then, Crafty Nannas could be for you. Meeting once a month on 2nd Tuesday between 2pm – 4pm at The Castle Club, Church Lane, Castle Hedingham with refreshment served. This club is for anyone who likes to do crafts, whether you are a nanna or not, we would welcome you to come and join in the fun!

T Club

This club takes place on last Wednesday each month at The Memorial Hall, Church Lane, Castle Hedingham between 2pm – 4pm. It is a club where older people can enjoy a chat & a cuppa, accompanied by delicious refreshments & a raffle. Admission is £2.50p.

Should you wish to know further details about any of these activities, please contact Jayne Laken on 07458 300 903.

We look forward to seeing you



HEDDINGHAM MEDICAL CENTRE

Dr Ruth Silcox Dr Caroline Davies Dr Steven Gresham
Dr Annabel Bucher Dr Rebecca Bennett Dr Cathy Boon Dr Jessica Gell

10 Falcon Square,
Castle Heddingham, CO9 3BY

77 Swan Street,
Sible Heddingham, CO9 3HT

Tel 01787 461 465

Surgery Hours

Mon 8.30am – 1.00pm, 2.00-6.00pm
Tue 8.30am – 1.00pm, 2.00-6.00pm
Wed 8.30am – 1.00pm, 2.00-6.00pm
Thu 8.30am – 1.00pm, 2.00-6.00pm
Fri 8.30am – 1.00pm, 2.00-6.00pm

A&E and 999 services
are for emergency
situations only

www.hedmed.co.uk



Supporting independent living

Putting people in contact with organisations
that provide services they need.

This service can help you with local social
group; learning; entitlement benefits; fire and
home safety checks; health & fitness;
transport; carer's support and care services;
volunteering and much more...

All Community Agent referrals and enquiries
should go to Essex Wellbeing Service.

Tel: 0300 303 9988

Email: provide.essexwellbeing@nhs.net
www.essexwellbeingservice.co.uk

Essex Wellbeing Service Opening Hours:

Monday to Friday 8.00am - 7.00pm

Saturday 10.00am to 2.00pm

*All enquiries, will be responded to during the
opening hours above*

CASTLE HEDDINGHAM PAROCHIAL CHARITIES

A Trust Fund exists in Castle
Heddingham for any resident 'in
need, distress or suffering
hardship'. Hospital transport**
can also be arranged depending
on need and availability

For more information please
contact the secretary
Mrs Brenda Beadle 01787 460336

** We would be pleased to hear from
anyone willing to join the rota of drivers



HERITAGE

Free Market Appraisals

Sales & Letting Agent
54 High Street
Earls Colne
CO6 2PB
01787 722000

www.essexheritage.co.uk

CH Village Hall

Castle Hedingham Village Hall Church Lane - CO9 3DA



KATHRYN ROBERTS & SEAN LAKEMAN

Castle Hedingham Village Memorial Hall

18th May, 7.30pm (doors 7pm) Tickets £12

collect from Village Shop, Castle Hedingham, CO9 3EJ
or Darkins DIY Stores, Sible Hedingham, CO9 3HP

kathrynrobertsandseanlakeman.com

Twice voted
'Best Duo'
BBC Radio 2
Folk Awards

Castle Hedingham Village Hall is a great venue for all your social and recreational needs. Fully equipped and recently refurbished.

Regular classes and groups currently include; Fitness, Pilates, Dance Fitness, Meditation, Art Group, Women's Group, Heritage Group, Over 50's Tea Club, Faith Group and Amateur Dramatics.

If you are looking for a venue for your party, fund-raising event, wedding or any other social get-together, look no further. **We charge one of the lowest rates in the area;** and if you are thinking of starting an activity group, **we offer reductions to affiliated members.**

For information and Hall Bookings call Ann Edney 07736 239599





During the warmer months, we open to the public to host tours and tastings. Whilst taking a stroll through the Vineyard set in the beautiful North Essex countryside, you will learn about growing grapes and producing award-winning wine in England. The tours conclude in our magnificent 16th Century threshing barn, the Cellar Door, where you will sample three of our award-winning wines and one of our gins.

All our 2024 tours start at 2pm and last approx. 1.5hrs. (£25pp)



Sat 27th April
Sun 19th May
Sun 30th June
Fri 5th July
Sat 20th July
Sat 10th Aug
Sun 8th Sept
Sun 22nd Sept
Sun 6th Oct

Another date for your diary is our annual **Jazz in the Vines** event on Saturday 24th August

To find out more and book online visit our events page at www.tuffonhall.co.uk

Tuffon Hall Vineyard, Graves Hall Road, Sible Hedingham, CO9 3LL

Anglian

Plumbing Heating & Electrics



- Local family business
- All Combi Boilers fitted with a 7-10 yr warranty
- Boilers serviced & repaired (Gas, Oil, LPG)
- Bathrooms, Showers, Landlord's Certificates, Powerflushing
- All general plumbing work undertaken

10%
Discount for OAPs
£10 discount
if we are late for an appointment

Tel: 07825 348 536 | Tel: 01787 278511

www.anglianphe.co.uk





Church Officers



Rector	Vacant	
Associate Priest	Rev Justin Tomkins	01787 237211
Organist	Mark King	01787 469582

Saint Nicholas' Church, Castle Hedingham

Churchwarden	Sue Southgate	01787 461638
Treasurer	Alison Lilley	01787 461488
Secretary	Rosemary King	01787 469541
Bell Ringing	David Newton	07919 043544
Magazine Distribution	Sue Southgate	01787 461638

Saint Peter's Church, Sible Hedingham

Churchwarden	Tracy Goodchild	07530 244799
Treasurer	Alison Lilley	01787 461488
Secretary	Glenys Young	01787 463848
Bell Ringing	Janice Watkins	01787 460900
Magazine Distribution	Alison Lilley	hedparmag@gmail.com



ARBOR-ELITE

• TREE SURGERY •

SPECIALISTS IN ALL ASPECTS OF TREE CARE

FULLY INSURED

07850 877 828 01787 323 505
arbor.elite@yahoo.com www.arbor-elite.co.uk



Follow us @arbor.elite



NPTC



Parish Contacts



1st Hedingham Guides	Kathie Hoye	01787 280200
Alderford Water Mill	Owen Hawkes	07939 372987
Art Group	Dawn Howard	07868 520617
Beavers, Cub Scouts & Scouts	Stuart Carter	01449 259046
Book Group	Alison Cantor	01787 462537
Brownies	Michelle Blake	01787 460189
C/Hed Bowls Club (Sheepcot Rd)	Tony Haywood	axel54tony@gmail.com
C/Hed Club	Dave Applebee	01787 462172
C/Hed Gardening Club	Maureen Lofting	01787 463343
C/Hed Cricket Club	Terry Jackson	07870 566865
C/Hed Memorial Hall Bookings	Ann Edney	07736 239599
C/Hed Parish Council Clerk	Claire Waters	07845 056597
C/Hed Parish Council Chairman	Garry Southgate	01787 461638
C/Hed Parochial Charities	Brenda Beadle	01787 460336
C/Hed Tennis Club	Sam Stent	01787 463657
C/Hed Women's Group	Sylvia Anderson	01787 469129
Castle Players	Alan Rees	07964 024082
Explorer Scouts	Adam Hearn	07447 443390
Friends of St Nicholas' Church	Ros Stafford	01787 461921
Friends of St Peter's Church	Hilary Phillippo	01787 469189
Hed & District Royal British Legion	Malcolm Firman	01787 462398
Hedingham Baptist Church	Nick Vosper	07909 901466
Hedingham History Group	Jan Cole	01787 829317
Hedingham Singers	Bob Lilley	07790 573435
Hedingham United Football Club	Garry Heather	07788 731487
Hedinghams District Councillors	Jo Beavis	07771 984365
	Wendy Taylor	07950 708780
Heritage Society	Rob Worley	01787 460664
Library	169 Swan Street	01787 460650
Molly's Wood	Jane Postma	07759 944215
S/Hed Parish Council: Clerk	Lesley Slade	01787 462568
S/Hed Village Hall Bookings	Fiona Earey	07739 582028
Castle Tea Club)		
The Crafty Nana)	Jayne Laken	07458 300903
Thursday Club)		

TO MAKE A BOOKING

T: 01787 460999

E: trips@deveretravel.com
W: www.deveretravel.com



DE VERE TRAVEL GROUP
transport and trips

OUR FULL LIST OF EXCURSIONS CAN BE FOUND ON WWW.DEVERETRAVEL.COM

ALL PRICES INCLUDE
LUXURY MINI-COACH
TRAVEL FROM

Gt. Yeldham
The Heddingham's
Halstead & Braintree

YOUR LOCAL COMPANY SERVING THE COMMUNITY

Wednesday 17 th April London – EVENING PERFORMANCE	"MOULIN ROUGE"	FINAL SEATS!	£109.00
Saturday 20 th April Southend – EVENING PERFORMANCE	"WHATS LOVE GOT TO DO WITH IT?"		£69.00
Wednesday 24 th April London – MATINEE PERFORMANCE	"PHANTOM OF THE OPERA"		£79.00
Thursday 9 th May London – MATINEE PERFORMANCE	"HAMILTON"	FINAL SEATS!	£105.00
Tuesday 21 st May London – EVENING PERFORMANCE	"OPENING NIGHT"		£99.00
Thursday 23 rd May Southend – EVENING PERFORMANCE	"BONNIE & CLYDE"		£69.00
Sunday 26 th May London – MATINEE PERFORMANCE	"CHOIR OF MAN"	NEW!	£69.00
Thursday 6 th June London – EVENING PERFORMANCE	"SISTER ACT"		£79.00
Saturday 22 nd June London – MATINEE PERFORMANCE	"WICKED"		£89.00
Thursday 27 th June London – EVENING PERFORMANCE	"KISS ME KATE"	FINAL SEATS!	£99.00
Thursday 11 th July London – MATINEE PERFORMANCE	"FROZEN"		£84.00
Friday 12 th July London – EVENING PERFORMANCE	"MRS DOUBTFIRE"		£89.00
Thursday 25 th July London – MATINEE PERFORMANCE	"BACK TO THE FUTURE"		£99.00
Wednesday 31 st July Norfolk – DAY VISIT	"SANDRINGHAM FLOWER SHOW"		£59.00
Wednesday 14 th August Southend – MATINEE PERFORMANCE	"PRETTY WOMAN"		£75.00
Thursday 5 th September Southend – EVENING PERFORMANCE	"101 DALMATIANS" THE MUSICAL		£85.00
Friday 6 th September London – EVENING PERFORMANCE	"LION KING"	NEW!!	£95.00
Thursday 12 th September London – MATINEE PERFORMANCE	"LES MISERABLES"	NEW!	£89.00
Wednesday 2 nd October Southend – MATINEE PERFORMANCE	"ONLY FOOLS & HORSES"		£75.00
Thursday 10 th October London – EVENING PERFORMANCE	"SIX"		£89.00
Wednesday 6 th November Southend – MATINEE PERFORMANCE	"GREASE"	FINAL SEATS!	£69.00

Come and join us on the above visits in our Executive 16 seat Mini Coach with air-conditioning, USB points, leather reclining seats and a panoramic roof. All visits require a minimum number of passengers to proceed.